



# The 3<sup>rd</sup> SUIJI Seminar in Kochi Rector Forum: Enhancing Partnership Between University and Local Community

Sri Raharjo

Universitas Gadjah Mada

August 28-29, 2013

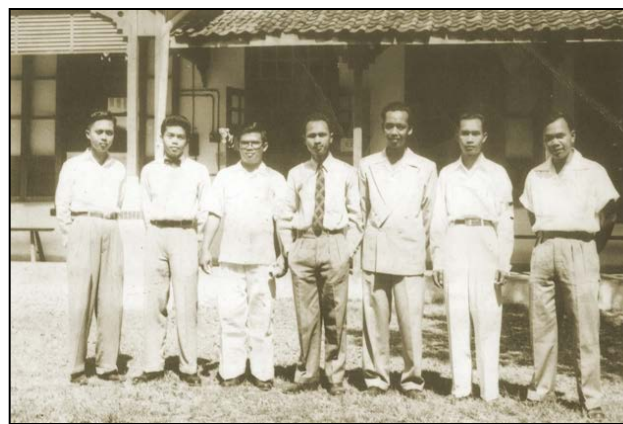
# Student Community Service Education



# Leadership in Student Community Service (KKN)

- *Go to the People.*
- *Live among them, Love them, Learn from them.*
- *Start from where they are, Work with them, Build on what they have.*
- *But with the best leaders,*
- *When the task is accomplished, The work completed,*
- *The people all remark: “We have done it ourselves”.*

**In its early days (1951-1962), Universitas Gadjah Mada sent volunteer students to teach and set up a high school outside Java through a project named as PTM (*Pengerahan Tenaga Mahasiswa, Students Mobilization*). UGM had sent 1218 students and helping the nation to set up 109 high school outside Java Island.**




# Wanagama, Universitas Gadjah Mada Forest, 600 Ha of dry land (1963)



# Wanagama, Universitas Gadjah Mada Forest, 600 Ha as Educational Forest (2013)



- 
- **In 1961-1964 GMU students plunge into the affected areas to eradicate**
    - **smallpox outbreak in Wonogiri,**
    - **dysentery outbreak in Pekalongan,**
    - **vaccination to 14,092 people in Yogyakarta,**
    - **tackle disease outbreaks in Lampung,**
    - **helping helping victims of Mount Agung eruption in Bali,**
    - **helping famine victims and building water reservoirs in Gunung Kidul.**



**Three villages in the foot of Mt. Merapi always face clean water shortages. Springs are 4km away from residential areas, and in the abyss as deep as 150 m. Efforts to build a water pipeline has been pioneered in 1961.**





# Underground Piping Construction



# On Ground Piping Construction



# Power Plants for Water Raising



**Electrical generator with 55kVA using biofuel**

**Solar panel**

# Water Reservoirs



- Reservoir capacity is 60m<sup>3</sup>
- Distribution to 7 villages are supported by 26 outlet points



(Perwira, 2007)



**Students trained the community  
on how to reduce the risk of natural disaster through  
Land Slide Early Warning Program**

# Bridging the university and its community



**Researchers in UGM are studying parasitic fungi on yellow cyst nematodes**



**Potato field devastated by yellow cyst nematodes**

# Disseminate knowledge and technologies to the people



**Dissemination of biological control technology for yellow cyst nematodes to potato farmers**

# Illiteracy Eradication Using Mother Tongue Languages

<b>Main Activity</b>	To eradicate illiteracy using moduls with mother tongue languages.
<b>Year</b>	2006 and 2007, up to now
<b>Location</b>	Jawa, Sulawesi, Bali, and Madura Islands
<b>Partner</b>	Indonesian Ministry of National Education
<b>Budget</b>	US \$ 72,193 (2006) US \$ 464,599 (2007)
<b>Input</b>	490 students and 2509 participants with 86,3% success ratio (2006) 815 students and 12.000 participants with 87,5% success ratio (2007)
<b>Output</b>	Reduced of illiteracy rate





# Small Medium Enterprises Empowerment

<b>Main Activity</b>	To empower small and medium enterprises on finance management, business plan, awareness of environmental safety
<b>Year</b>	1998 up to now
<b>Location</b>	Yogyakarta Province
<b>Partner</b>	Bank BNI 46 Branch UGM Yogyakarta, Kaltim Prima Coal (KPC)
<b>Budget</b>	In 2006 US \$ 213,904 (capital credit investment)
<b>Input</b>	700 students
<b>Output</b>	In 2006 capital US \$ 196,792 for 84 SME, with NPL : 0
<b>Sustainability</b>	Collaborations with local governments and industries



# Coastal Area Plantting

<b>Main Activity</b>	Plantting of coastal area to prevent coastal abrasion
<b>Year</b>	2006 up to now
<b>Location</b>	Kebumen District, Central Jawa
<b>Partner</b>	Local Government, Ministry of Forestry, Office of Forestry of Kebumen District, Local Community
<b>Output</b>	Changing from no vegetation and sandy area to become green coastal area in Kebumen District with the height of the plants ranging from 1-4 meter.
<b>Sustainability</b>	Establishing and training local organization to maintain green areas.





# UGM strategy

- 18 Faculties, 2400 faculty members, 6000 students per year to be deployed.
- Setting priority themes/focus
- Identified priority areas
- Facilitating resources
- Enabling staff and students
- Administrating and controlling



**Thank You**

# Service Learning Program

- Menghadiri pertemuan SUIJI di Bali (March, 2013)
- Mengumumkan dengan memasang poster
- Menyediakan Application form
- Menerima isian application form
- Melakukan seleksi (desk and interview)
- Mengumumkan yang lolos seleksi
- Meberikan pembekalan peserta
- Mengurus berbagai perijinan (misal:Visa, ijin dari KKN, surat rekomendasi)
- Menyampaikan daftar peserta SLP ke SUIJI di Jepang
- Mendapatkan Invitation Letter bagi peserta
- Menyiapkan dokumen keberangkatan dan asuransi
- Mengirim mahasiswa peserta SLP ke Jepang
- Memonitor pelaksanaan SLP
- Penyelesaian transfer kredit peserta SLP

# Persiapan JDP (Indonesia ke Jepang)

- Mengumumkan program JDP ke mahasiswa S2
- Menseleksi mahasiswa yang telah mendapat calon pembimbing (professor) di Jepang
- Memfasilitasi perijinan (status mhs aktif, bebas SPP di UGM)
- Memberi pembekalan tentang studi di Jepang
- Membantu pengurusan Visa
- Pemberangkatan mahasiswa ke Jepang
- Ticket dibayar sendiri oleh mhs
- Biaya hidup di Jepang ditanggung
- Penyelesaian transfer kredit

# Persiapan JDP (Jepang ke Indonesia)

- Menerima informasi mhs jepang akan ke Indonesia
- Menginformasikan program JDP ke agrokomplek
- Menginformasikan kepada fakultas yang akan ditempati mhs (thn ini terbalik)
- Membantu pengurusan visa